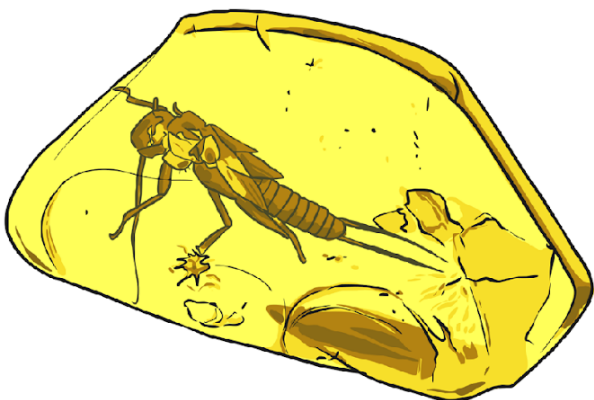
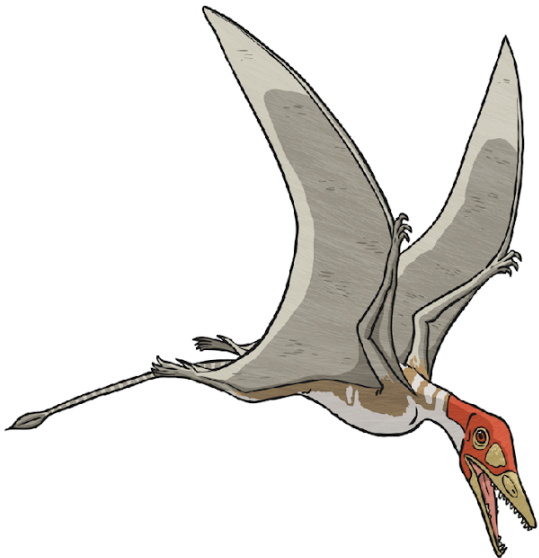
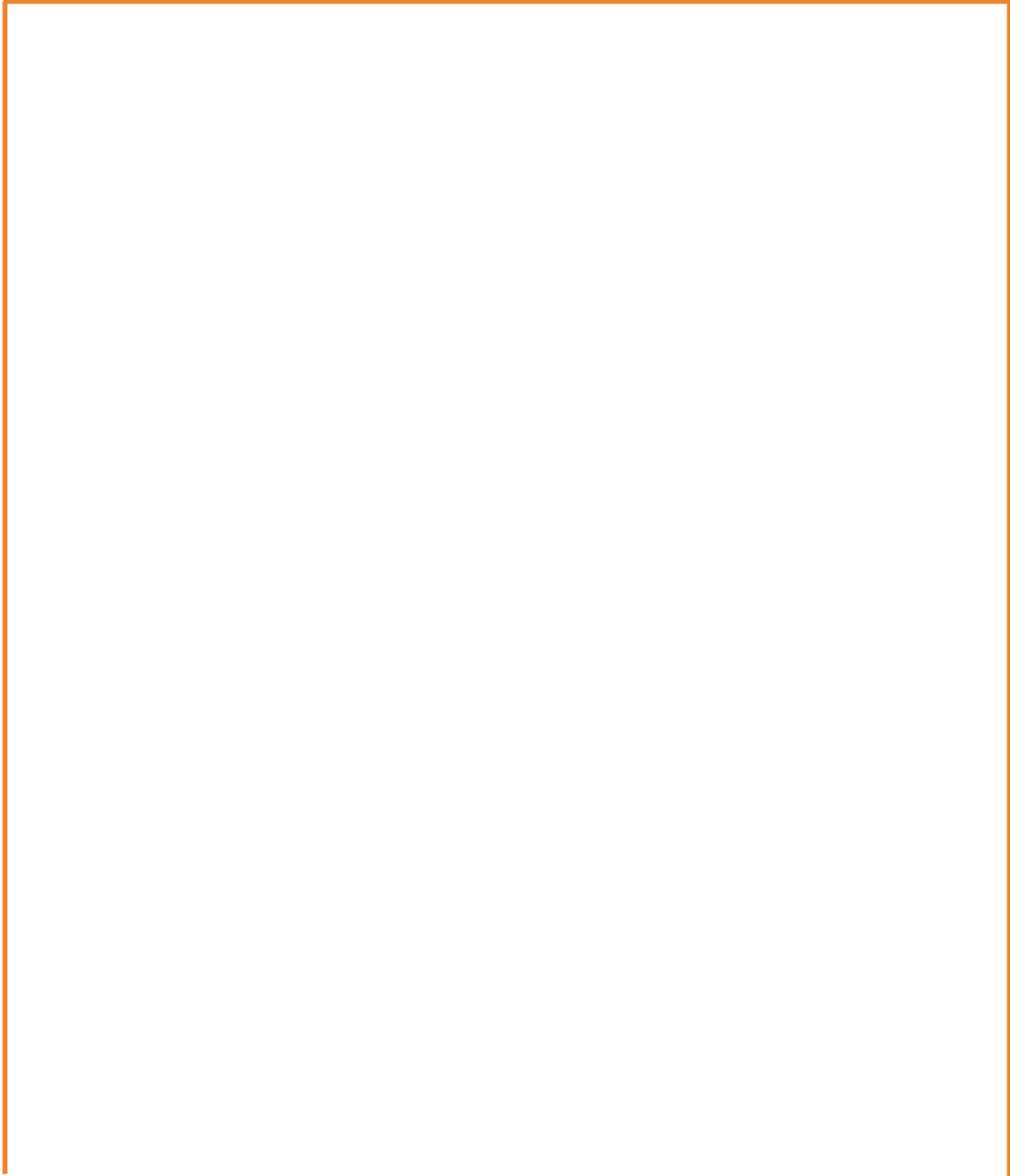
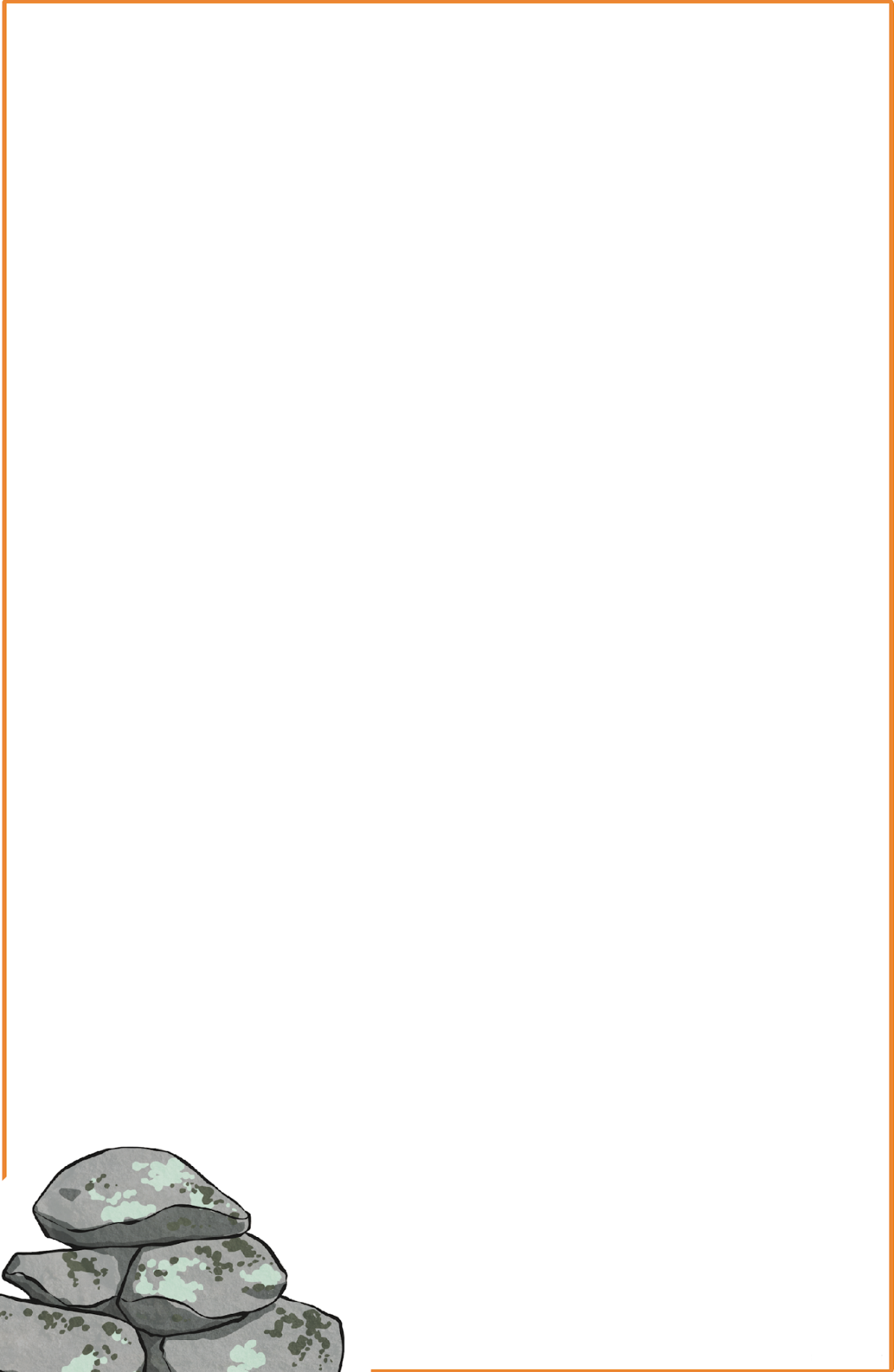


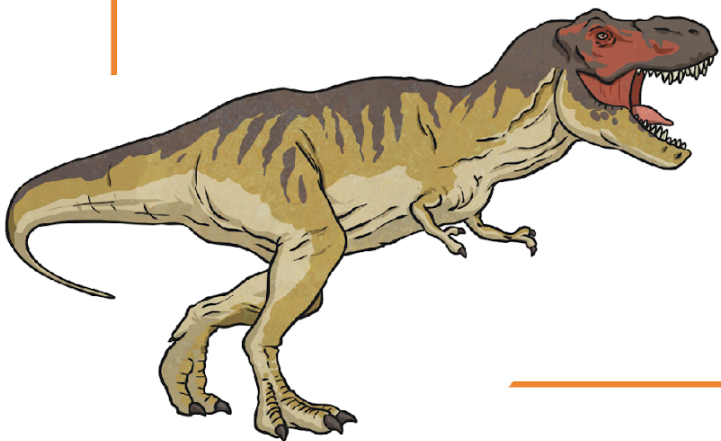


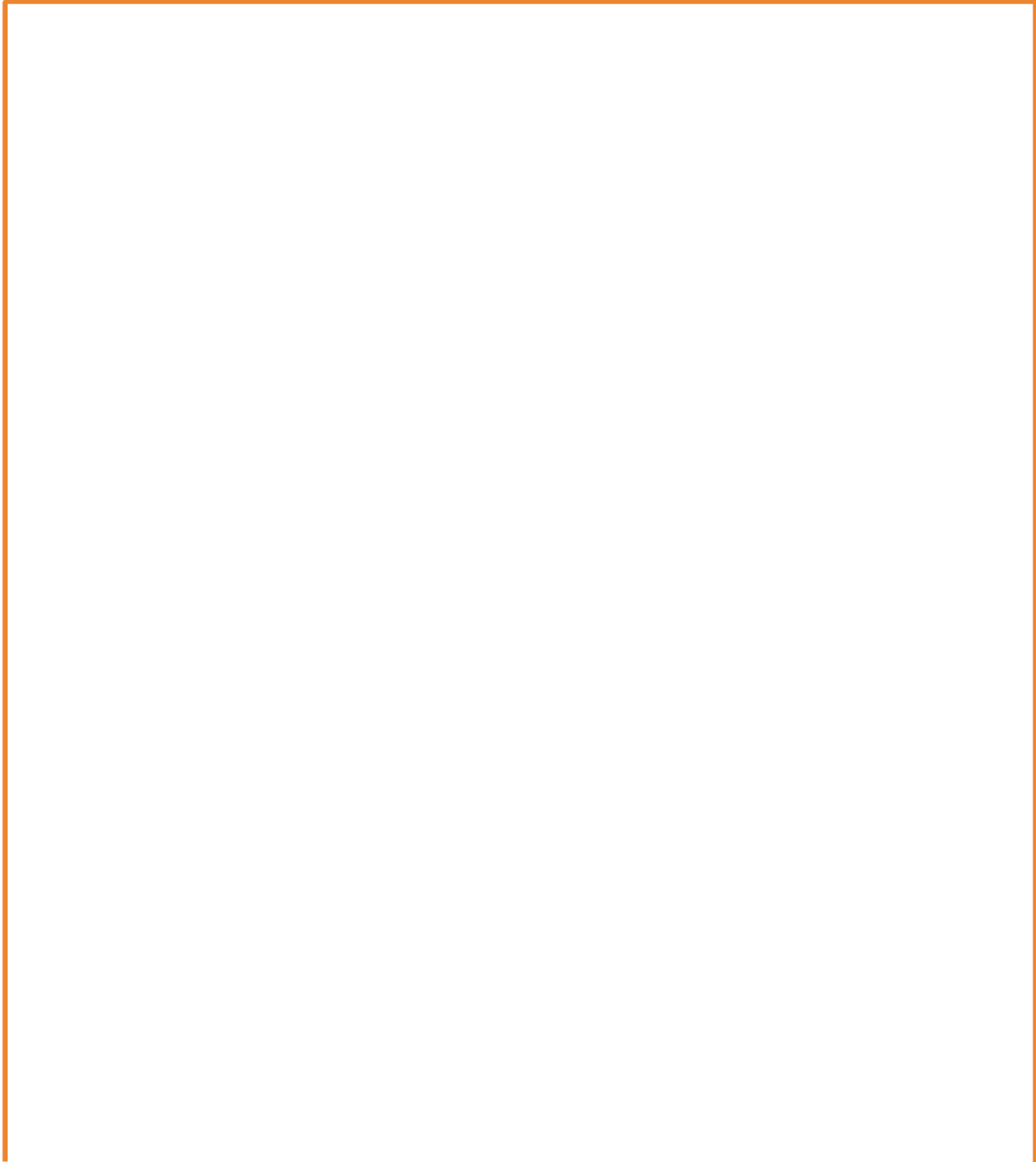
Insert text here.





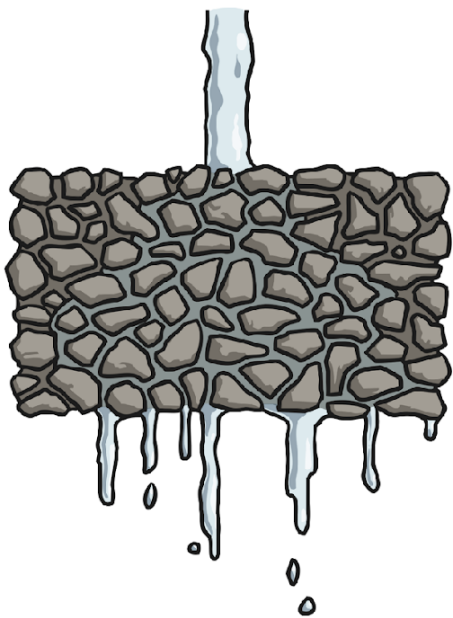
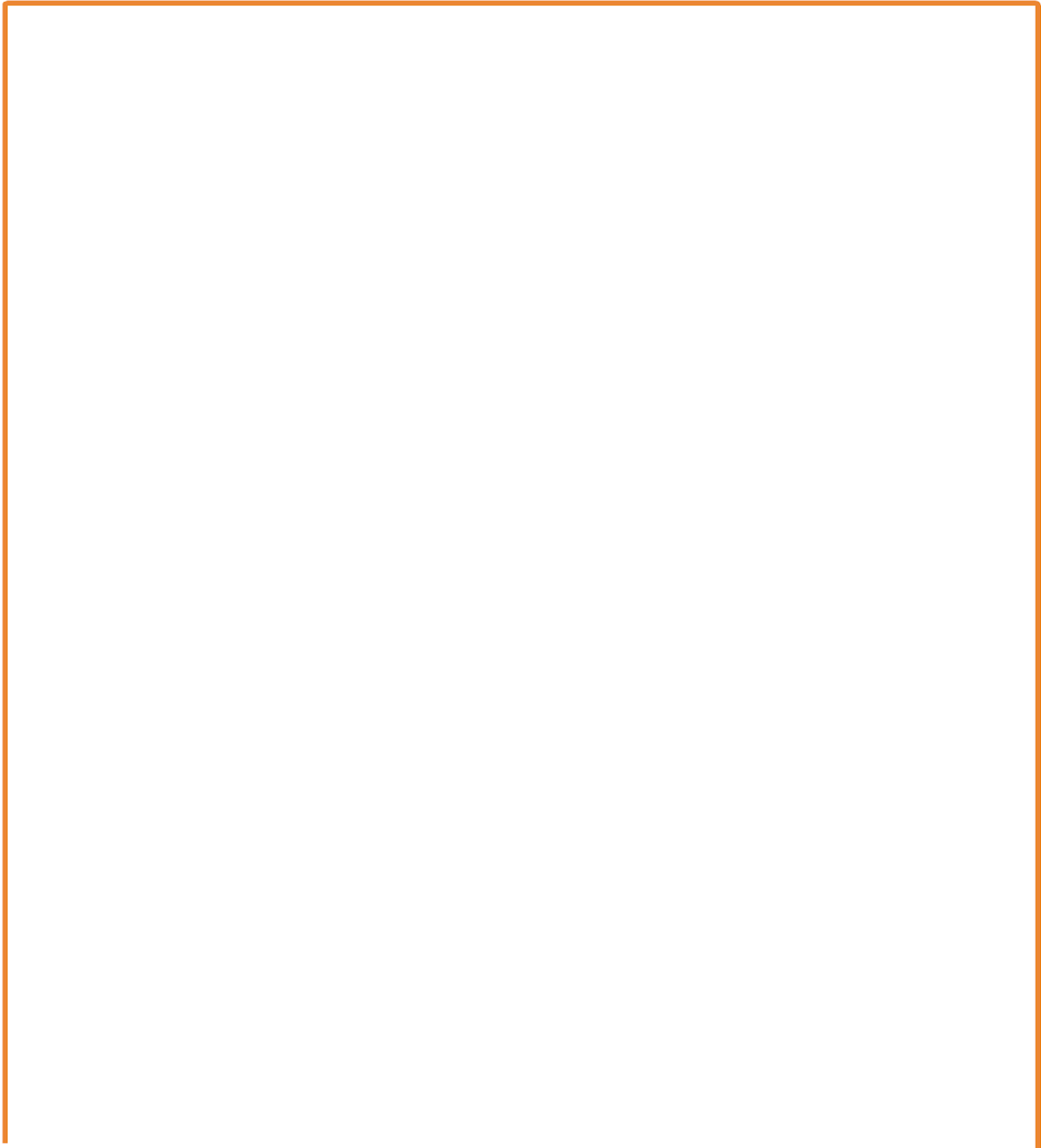


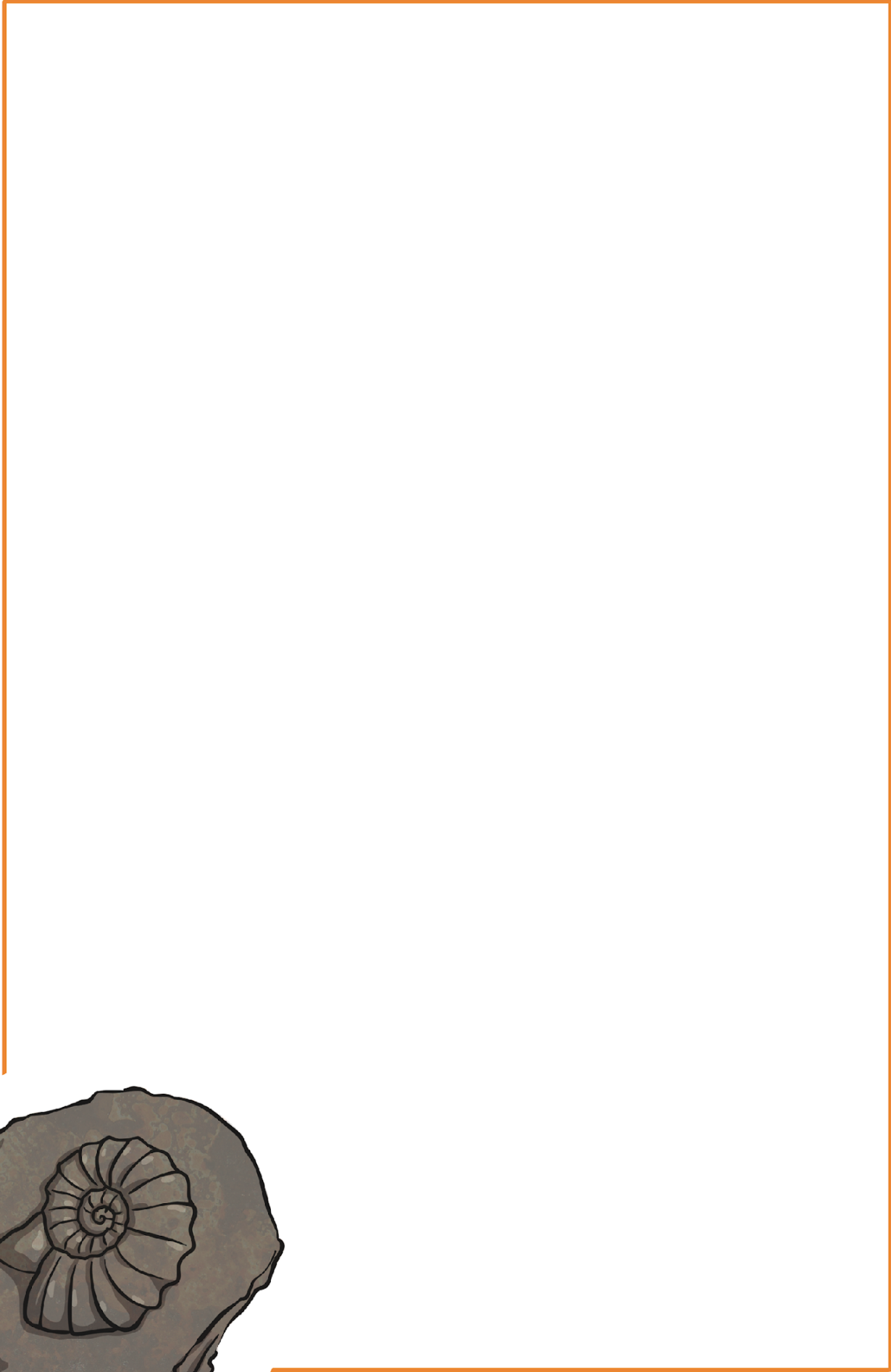


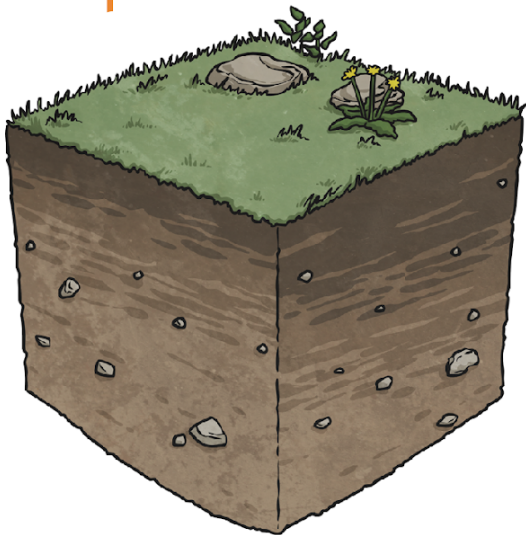


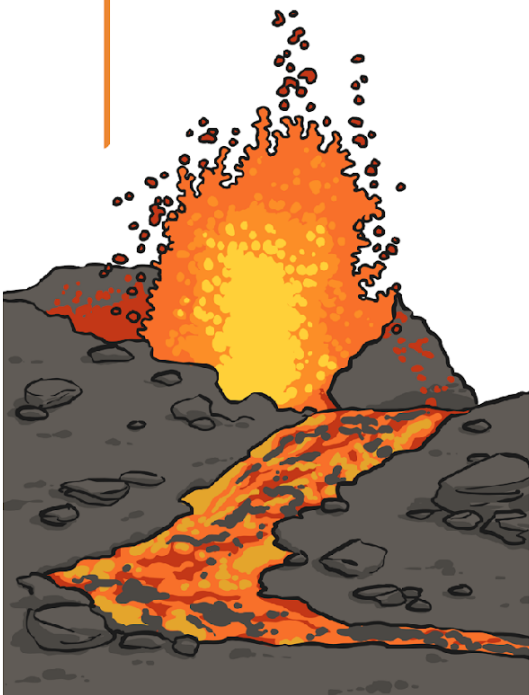
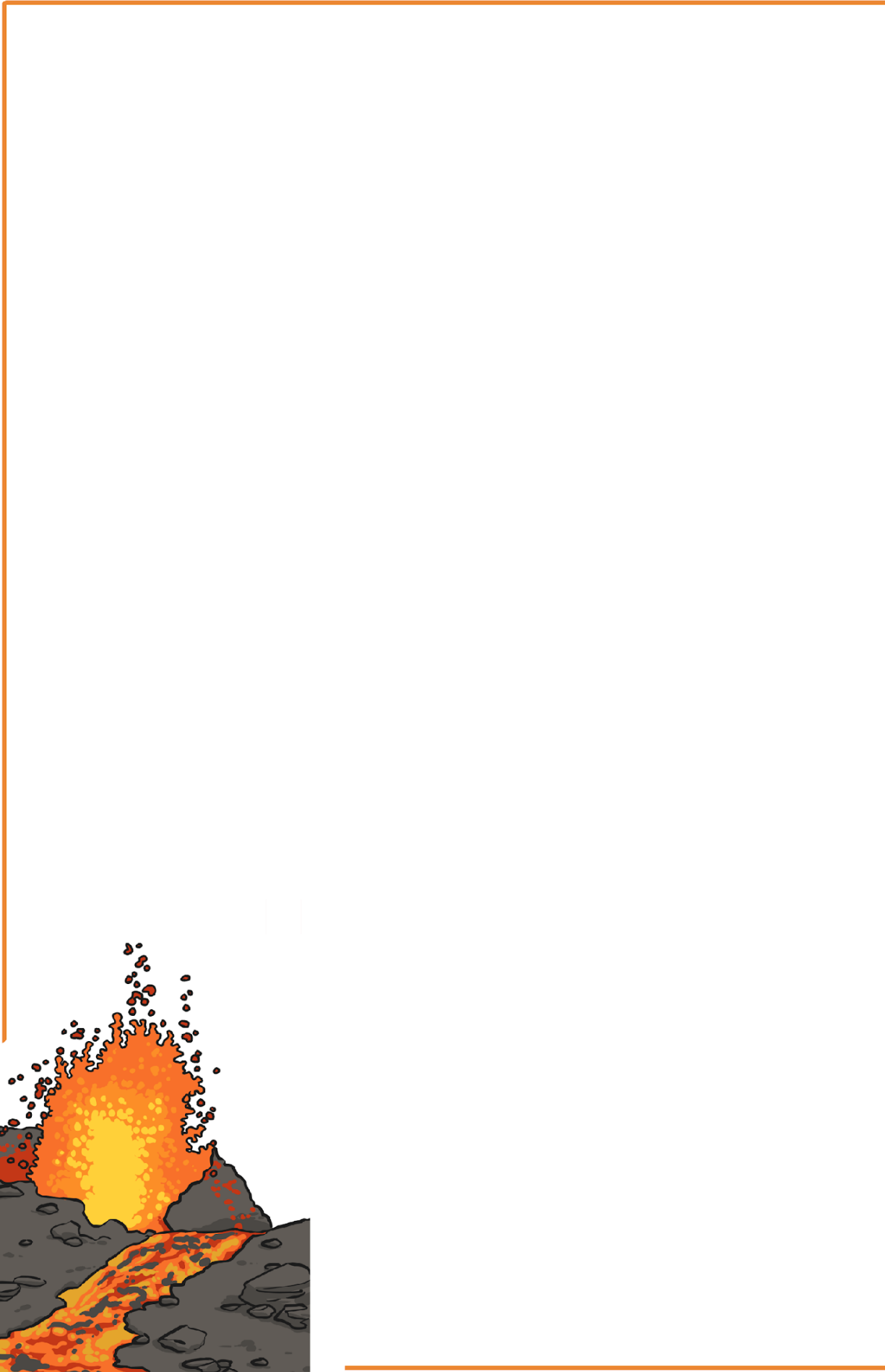






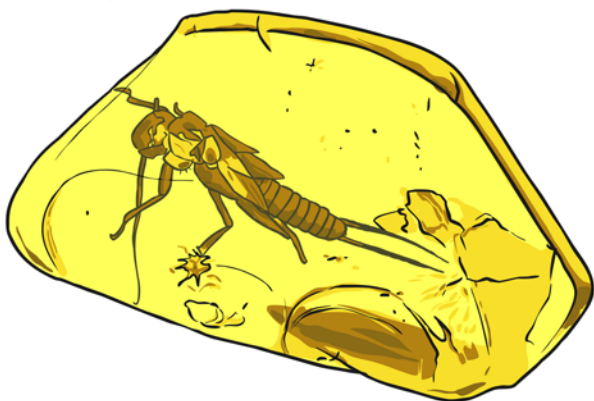






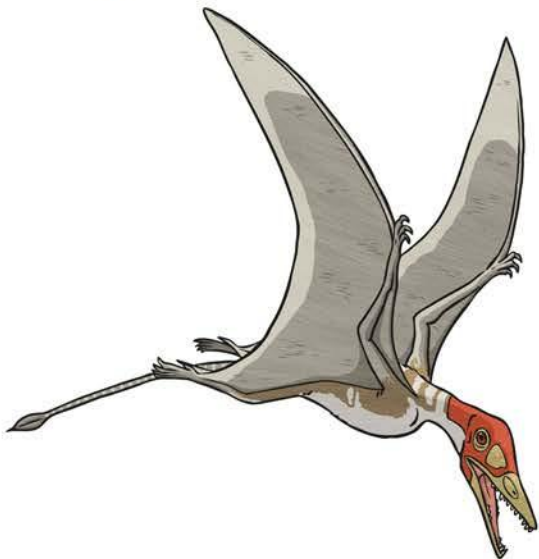


Insert text here.





Insert text here.



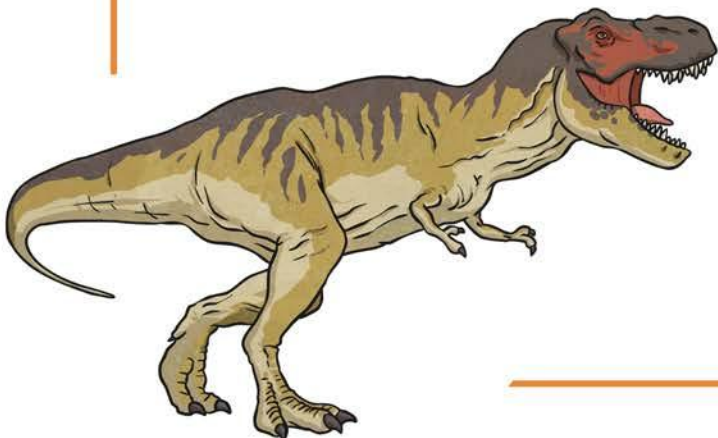


Insert text here.





Insert text here.







Insert text here.



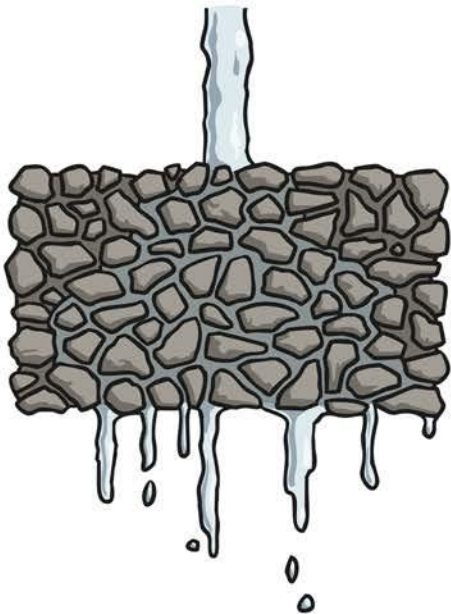


Insert text here.





Insert text here.



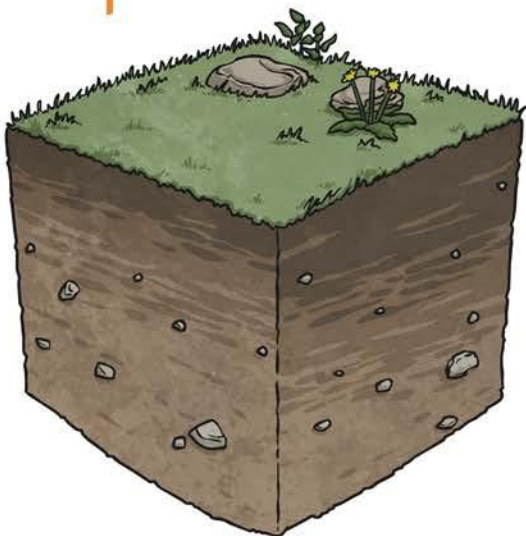


Insert text here.





Insert text here.





Insert text here.



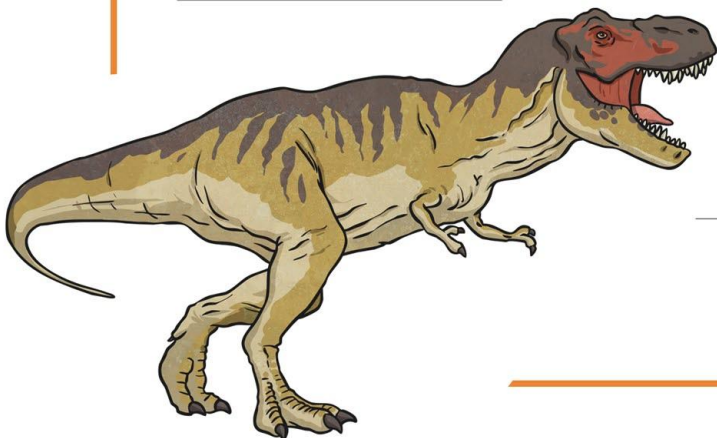


A large rectangular area enclosed by an orange border, containing several horizontal lines for writing.





A large rectangular area enclosed by an orange border, containing several horizontal lines for writing. The lines are positioned at the bottom of the page, starting from the left edge and extending towards the right edge.







A large rectangular area enclosed by an orange border, containing three horizontal lines for writing.



Three horizontal lines for writing, positioned to the right of the dinosaur skull illustration.



Large empty rectangular box for writing.

---

---

---



---

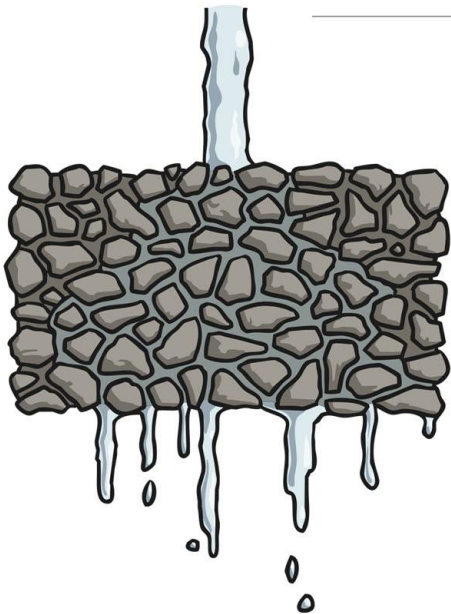
---

---

---



A large rectangular area enclosed by an orange border, containing three horizontal lines for writing.



A series of five horizontal lines for writing, positioned to the right of the stone wall illustration.



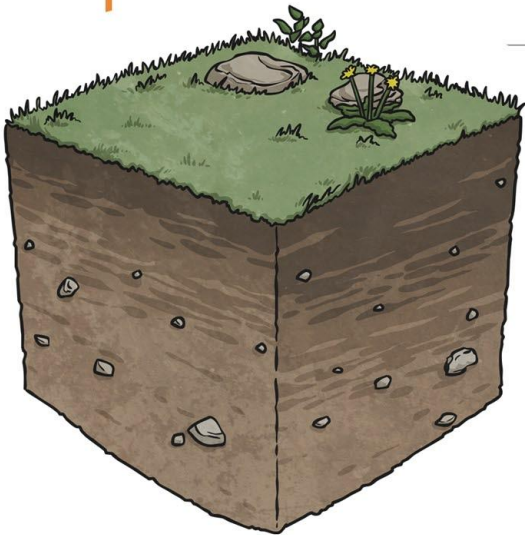
A large rectangular area enclosed by an orange border, containing four horizontal lines for writing.



Three horizontal lines for writing, positioned to the right of the ammonite illustration.



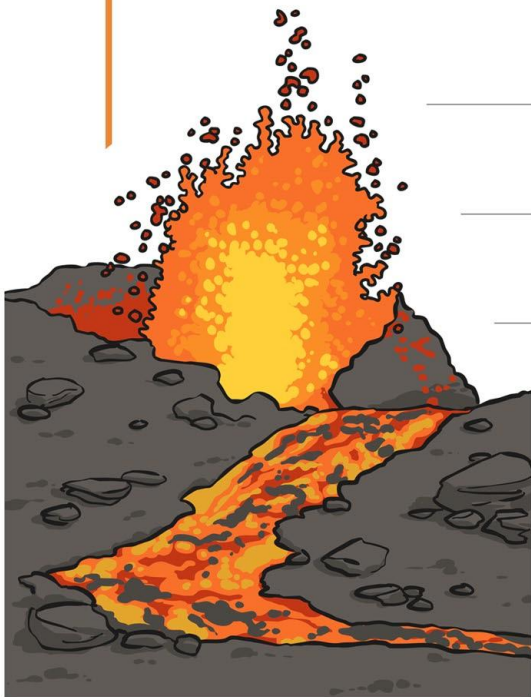
A large rectangular area enclosed by an orange border, containing four horizontal lines for writing.



A smaller rectangular area enclosed by an orange border, containing three horizontal lines for writing.

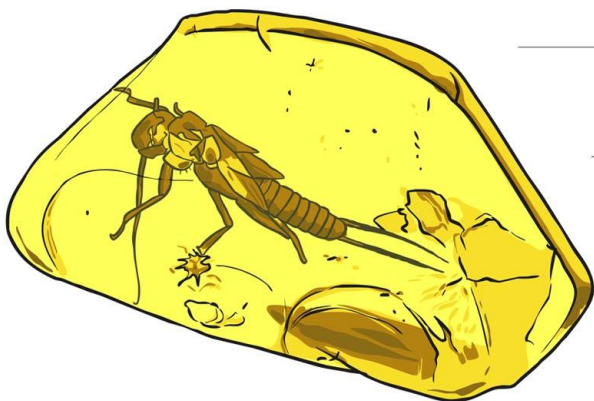


A large rectangular area enclosed by an orange border, containing several horizontal lines for writing.



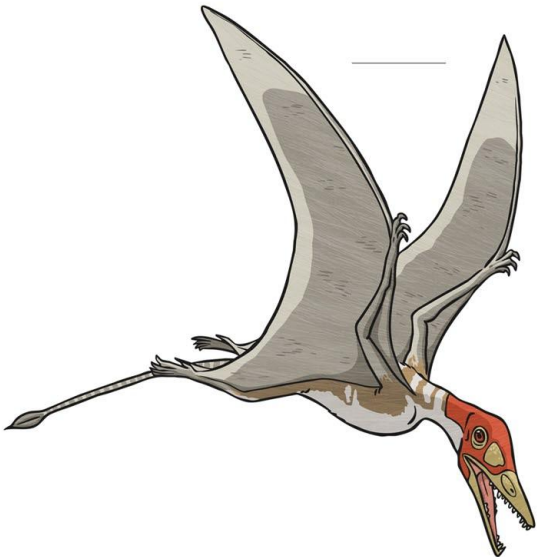


A large rectangular area enclosed by an orange border, containing several horizontal lines for writing.





A large rectangular area enclosed by an orange border, containing four horizontal lines for writing.



A smaller rectangular area enclosed by an orange border, containing three horizontal lines for writing.



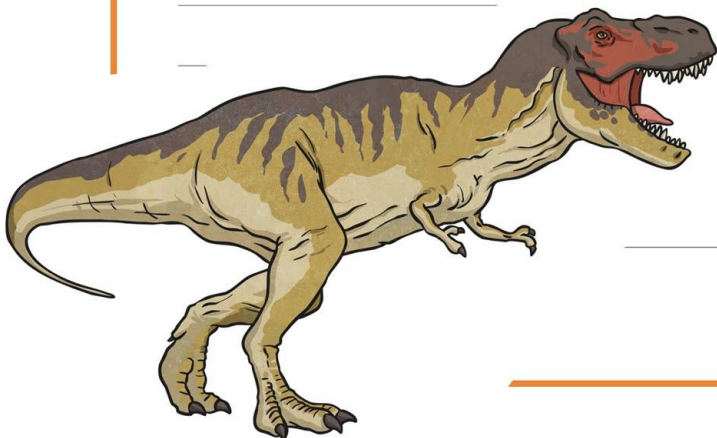


A large rectangular area enclosed by an orange border, containing a series of horizontal lines for writing. The lines are spaced evenly and extend across most of the width of the page.





A large rectangular area enclosed by an orange border, containing ten horizontal lines for writing.





Blank writing area with horizontal lines.



Blank writing area with horizontal lines.



Large empty rectangular box with an orange border, intended for a drawing or illustration.

Five horizontal lines for writing, located within the large empty box.

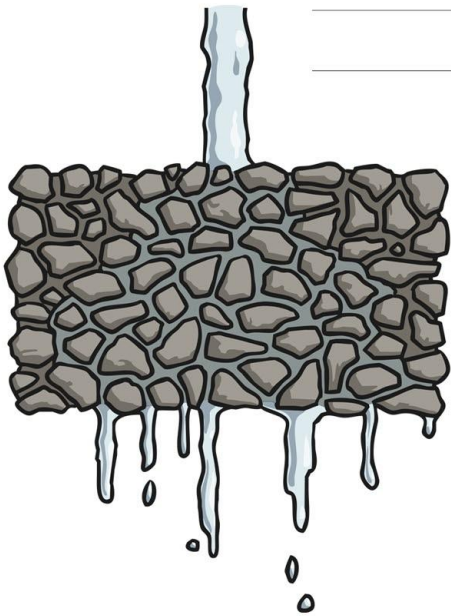


Five horizontal lines for writing, located below the herb illustration.



Large empty rectangular box for writing.

Five horizontal lines for writing.



Five horizontal lines for writing, positioned to the right of the dripping wall illustration.

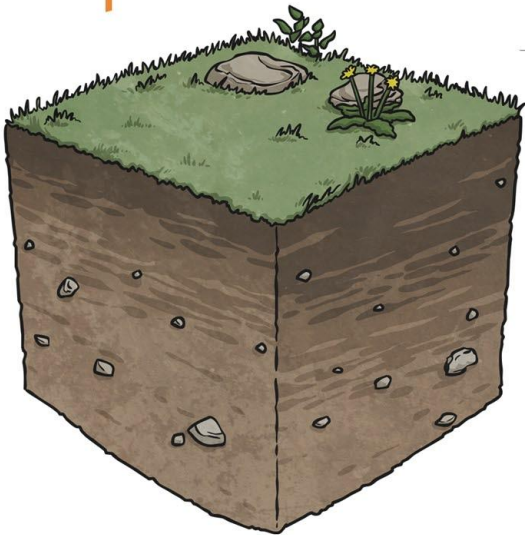


A large rectangular area enclosed by an orange border, containing several horizontal lines for writing.



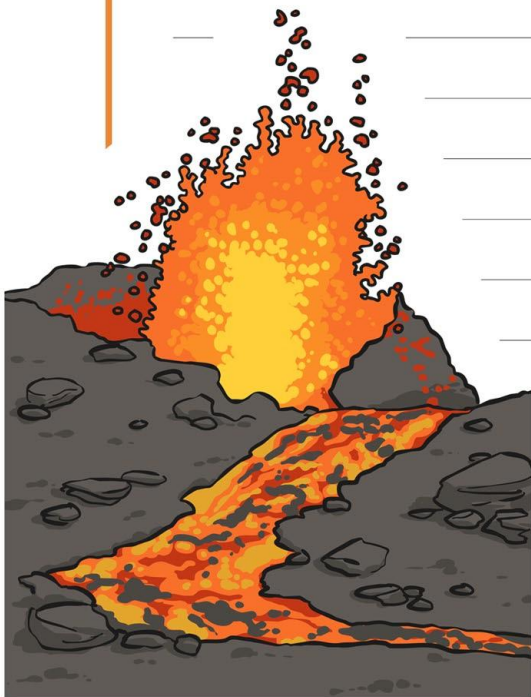


A large rectangular area enclosed by an orange border, containing several horizontal lines for writing.





A large rectangular area enclosed by an orange border, containing several horizontal lines for writing.







Large empty rectangular box with an orange border, intended for a drawing or illustration.

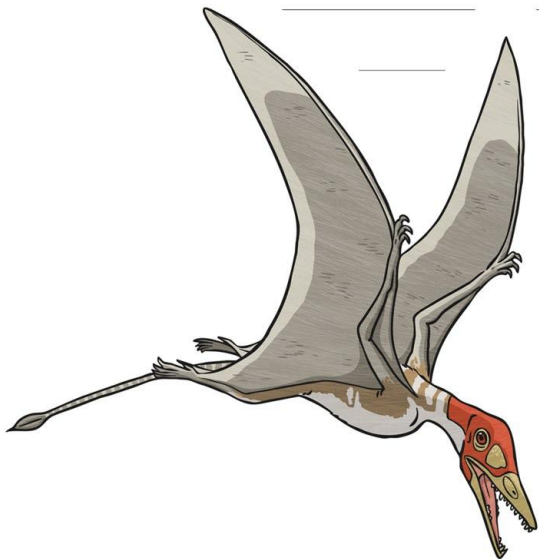
Seven horizontal lines for writing, located within the large empty box.



Three horizontal lines for writing, located below the fossil illustration.



A large rectangular area enclosed by an orange border, containing six horizontal lines for writing.



A series of seven horizontal lines for writing, positioned to the right of the pterosaur illustration.

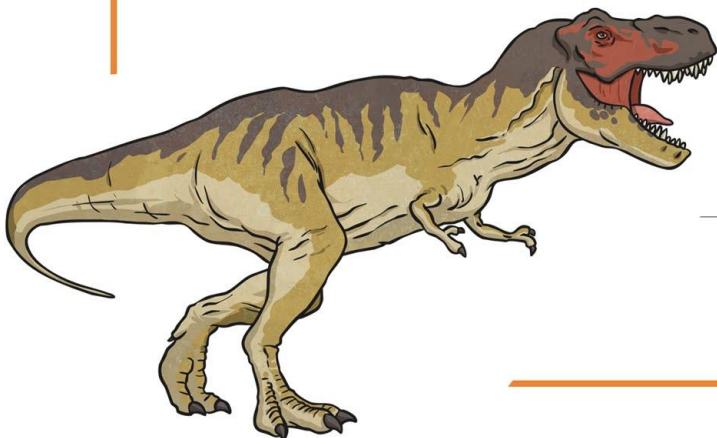


A large rectangular area enclosed by an orange border, containing 20 horizontal lines for writing.





A large rectangular area enclosed by an orange border, containing 20 horizontal lines for writing. The lines are evenly spaced and extend across most of the width of the page.





A large rectangular area enclosed by an orange border, containing 18 horizontal grey lines for writing.



Three horizontal grey lines for writing, located to the right of the dinosaur skull illustration.



Large rectangular area with a thick orange border and horizontal lines for writing.



Small rectangular area with a thick orange border and horizontal lines for writing, located below the herb illustration.



---

---

---

---

---

---

---

---

---

---

---

---

---

---

---

---

---

---

---

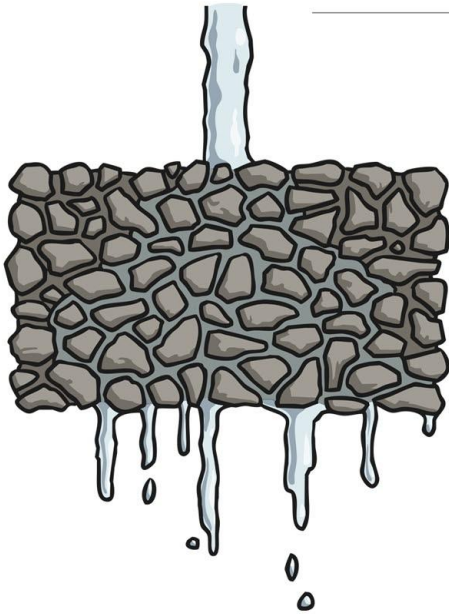
---

---

---

---

---



---

---

---

---

---

---

---

---

---

---



---

---

---

---

---

---

---

---

---

---

---

---

---

---

---

---

---

---

---

---

---

---

---

---



---

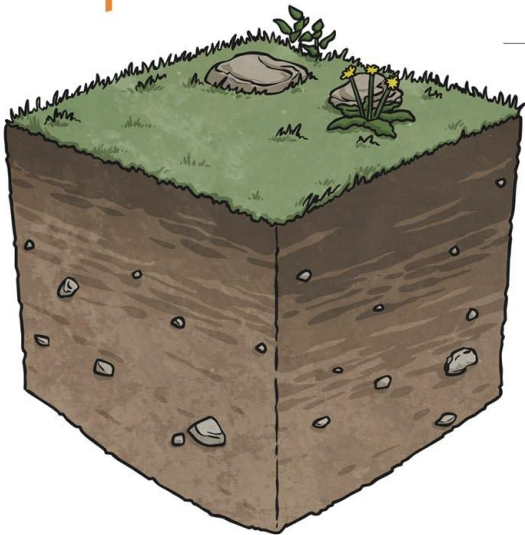
---

---





A large rectangular area enclosed by an orange border, containing 18 horizontal lines for writing.

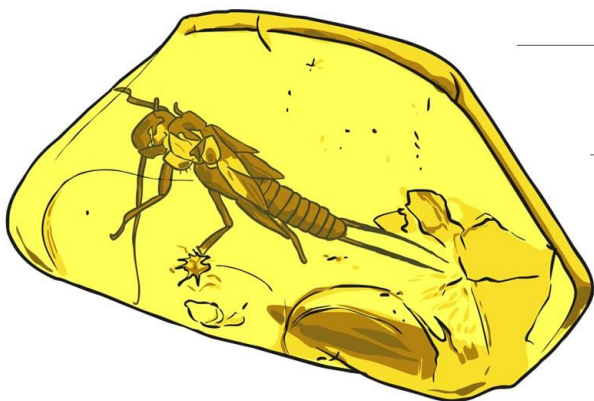


A smaller rectangular area enclosed by an orange border, containing 4 horizontal lines for writing.





A large rectangular area with an orange border, containing 18 horizontal lines for writing.



Two horizontal lines for writing, positioned to the right of the fossil illustration.



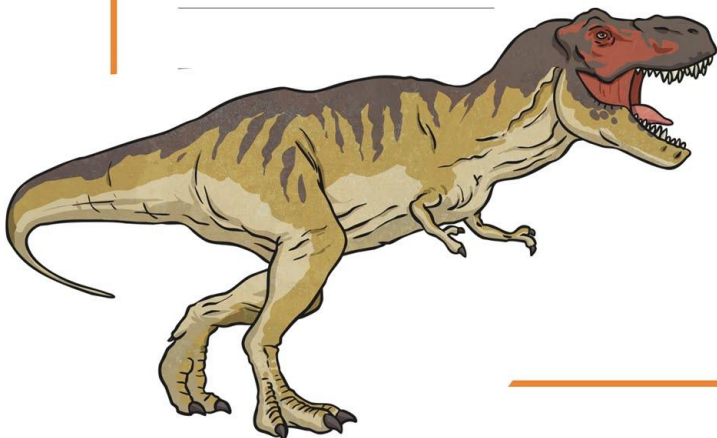


A large rectangular area enclosed by an orange border, containing 25 horizontal lines for writing.





A large rectangular area enclosed by an orange border, containing 25 horizontal lines for writing.



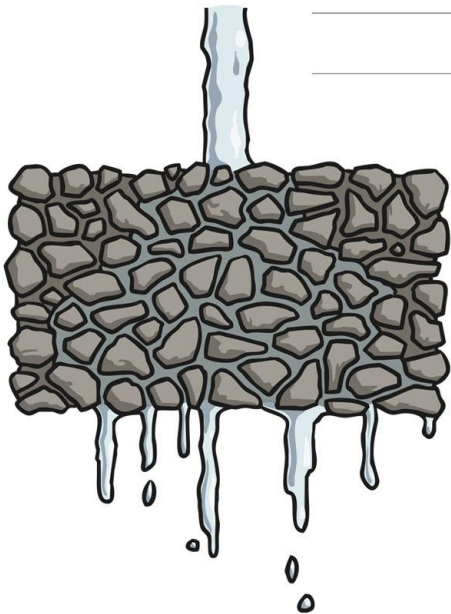








Lined writing area for notes.



Lined writing area for notes.

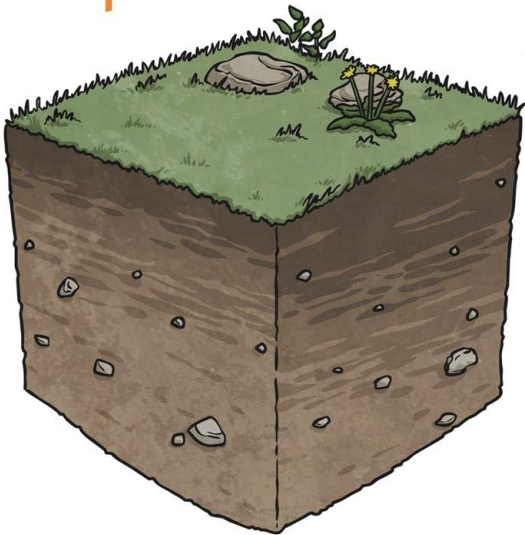


A large rectangular area enclosed by an orange border, containing 25 horizontal lines for writing.





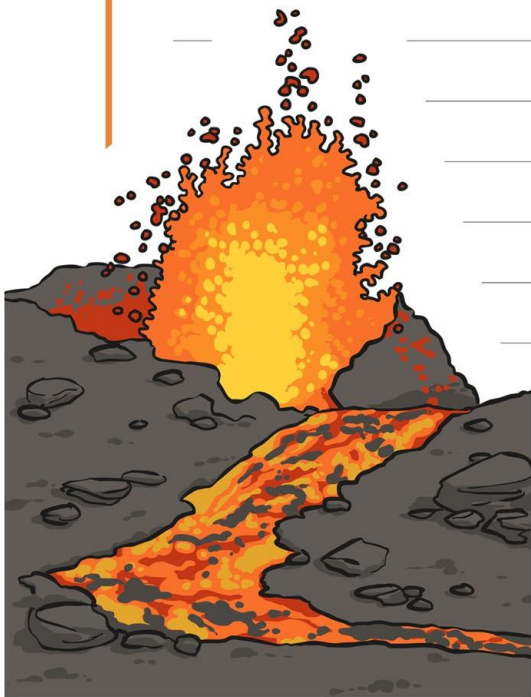
A large rectangular area enclosed by an orange border, containing 20 horizontal lines for writing.



A smaller rectangular area enclosed by an orange border, containing 5 horizontal lines for writing.

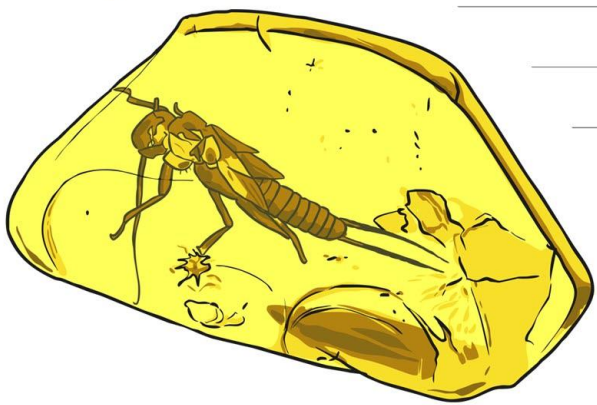


A large rectangular area enclosed by an orange border, containing 25 horizontal lines for writing.



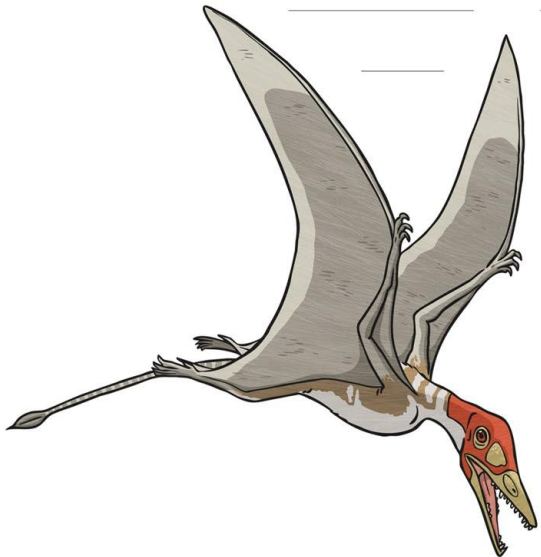


A large rectangular area with an orange border containing 25 horizontal lines for writing.





A large rectangular area with an orange border containing 20 horizontal lines for writing.



A smaller rectangular area with an orange border containing 4 horizontal lines for writing.